

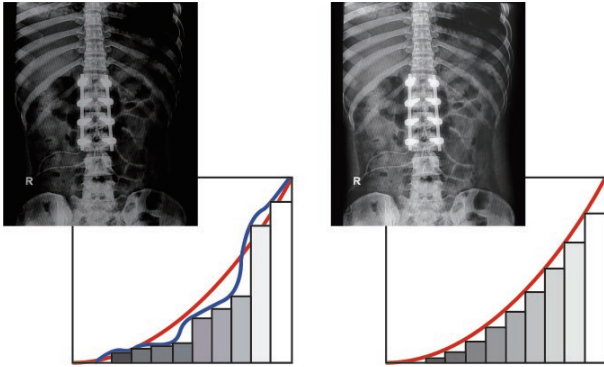
# MX-Series LED-backlit Display 22" | 24"

## Professional Clinical Displays of High Performance, Easy Maintenance



On top of DICOM compliance and medical-grade safety certification, the MX-Series are a premium choice for clinical review displays thanks to their ease for cleaning and disinfection. Equally important is their durability, derived from metal casing and NeoV™ Optical Glass, and multitasking feature that set them apart as professional displays fitting for myriad high-traffic medical settings.





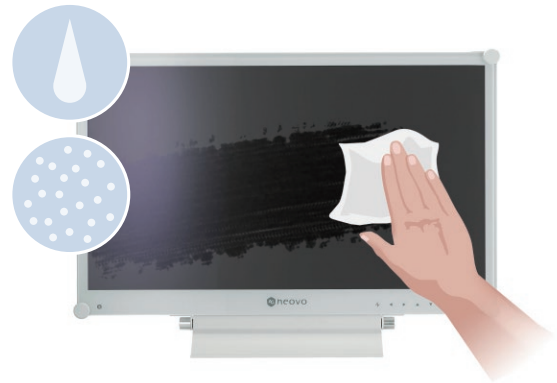
DICOM Mode

### Consistent Image Clarity

The MX-Series are fully competent for consistently rendering clinical data and non-diagnostic images. Meticulous calibration ensures their compliance with the DICOM Part 14 standard and, in turn, superb display quality manifested by the most accurate and consistent shadings possible over time.

### Easy Hygiene, High Reliability

The anti-acid and anti-alkali coating treatment of Neov™ Optical Glass helps the MX-Series withstand cleaning and disinfection. With the displays also bolstered by metal casing, this proprietary glass technology shields them from scratches or other damage and dramatically enhances image quality.



### Versatility for Multitasking

Multiple signal source options, including HDMI and DisplayPort 1.2, offer flexibility for the MX-Series to integrate with other instruments. Along the same lines is their PIP/PBP capability that makes possible multitasking—studying different images or matching medical records—in a single display.

### Medical-Grade Safety Certification

In a departure from standard displays, the MX-Series adopt specially designed low-voltage medical-grade power supply and earth-wire grounding to ensure safety, performance, and reliability—three key requirements for any professional medical environment. Compliance with the EN/IEC 60601-1 standards ensures their safe and reliable performance in the demanding medical setting.



EN/IEC 60601-1  
Medical-Grade

## Features

- Compliance with DICOM Part 14 with calibrated greyscale and brightness
- Metal casing and NeoV™ optical glass
- EN60601-1 and IEC60601-1 medical certification
- Equipotential terminal for safety standard
- Versatile inputs: VGA, DVI, HDMI, DisplayPort, Audio in
- Support PIP/PBP, 3D Deinterlace, Noise Reduction functions
- Anti-Burn-in™ technology
- EcoSmart Sensor allows brightness adjustment by ambient light
- VESA Mounting compliance to fit different medical environments
- Selectable aspect ratio for ultimate image
- Rigorous screening of the components for mission-critical 24/7 applications
- Gamma correction and black-level alignment



## Specifications

### MX-22

### MX-24

Panel	Panel Type	LED-Backlit TFT LCD	LED-Backlit TFT LCD
	Panel Size	21.5"	23.6"
Frequency (H/V)	Max. Resolution	FHD 1920 x 1080	FHD 1920 x 1080
	Pixel Pitch	0.2482 mm	0.2715 mm
	Brightness	250 cd/m <sup>2</sup>	300 cd/m <sup>2</sup>
	Contrast Ratio	1,000 : 1	1,000 : 1
	Viewing Angle (H/V)	170°/160°	170°/160°
	Disply Colour	16.7 M	16.7 M
	Response Time	5 ms	5 ms
Input	H Freq.	24 kHz – 82 kHz	24 kHz – 82 kHz
	V Freq.	50 Hz – 75 Hz	50 Hz – 75 Hz
Audio	VGA	15-Pin D-Sub	15-Pin D-Sub
	DVI	24-Pin DVI-D	24-Pin DVI-D
	HDMI	HDMI	HDMI
	DisplayPort	DisplayPort 1.2	DisplayPort 1.2
Power	Audio In	1 x stereo audio jack for PC (3.5 mm)	1 x stereo audio jack for PC (3.5 mm)
	Speaker	2 W X 2	2 W X 2
NeoV™ Optical Glass	Power Supply	External	External
	Power Requirement	DC 12 V	DC 12 V
	Consumption	< 18 W (On)	< 19 W (On)
Operating Conditions	Stand By	< 0.5 W (Stand-by/ Off)	< 0.5 W (Stand-by/ Off)
	Thickness	3.0 mm (0.12")	3.0 mm (0.12")
	Reflection Rate	< 1%	< 1%
	Transmission Rate	≥ 97%	≥ 97%
Storage Conditions	Coating Hardness	9H	9H
	Temperature	0°C ~ 40°C (32°F ~ 104°F)	0°C ~ 40°C (32°F ~ 104°F)
Mounting	Humidity	10%~90% (No condensation)	10%~90% (No condensation)
	Temperature	-20°C ~ 60°C (-4°F ~ 140°F)	-20°C ~ 60°C (-4°F ~ 140°F)
Security	Humidity	5%~95% (No condensation)	5%~95% (No condensation)
	VESA FPMPI	Yes (100 x 100 mm & 75 x 75 mm)	Yes (100 x 100 mm & 75 x 75 mm)
Dimensions	Kensington Security Socket	Yes	Yes
	w/ base (W x H x D)	513.0 x 369.0 x 155.0 mm (20.2" x 14.5" x 6.1")	562.0 x 397.0 x 155.0 mm (22.1" x 15.6" x 6.1")
Weight	Packaging (W x H x D)	602.0 x 476.0 x 212.0 mm (23.7" x 18.7" x 8.3")	676.0 x 525.0 x 213.0 mm (26.6" x 20.7" x 8.4")
	w/o base	6.9 kg (15.2 lb)	7.8 kg (17.2 lb)
Regulation Approval	Packaging	9.5 kg (20.9 lb)	10.6 kg (23.4 lb)
	Certification & Compliance	CE, EN60601-1, IEC60601-1, RoHS, WEEE, REACH	CE, EN60601-1, IEC60601-1, RoHS, WEEE, REACH
Optional Accessories	Supplied	Power Cord, Power Adaptor, 15-Pin D-sub Cable, Audio Cable, Quick Start Guide, Warranty Card	Power Cord, Power Adaptor, 15-Pin D-sub Cable, Audio Cable, Quick Start Guide, Warranty Card
		Wall Mount: Wall Mounting Arm: WMA-01 Wall Mounting Kit: WMK-01, WMK-03 Ceiling Mount: CMP-01 Desk Mount: Desk Mounting Kit: DMC-01, DMC-02D Desk Mounting Stand: DMS-01D, DMS-01Q Height Adjustable Stand: ES-02 Handle: HDL-02	Wall Mount: Wall Mounting Arm: WMA-01 Wall Mounting Kit: WMK-01, WMK-03 Ceiling Mount: CMP-01 Desk Mount: Desk Mounting Kit: DMC-01, DMC-02D Desk Mounting Stand: DMS-01D, DMS-01Q Height Adjustable Stand: ES-02 Handle: HDL-02

All specifications are subject to change without prior notice.

Copyright © 2017 AG Neovo. All rights reserved. The name AG Neovo is a trademark of AIC.

All other trademarks are the property of their respective owners.

P/C: MX2200/MX2400 Version 1.0, 20170824



**Global Headquarters**

Taipei, Taiwan

**EMEA Regional Headquarters**

Capelle a/d Ijssel, The Netherlands

**North & South America Regional Headquarters**

San Jose, CA, U.S.A.

**Asia-Pacific Regional Headquarters**

Taipei, Taiwan

**Canada Sales Office**

Vancouver, B.C., Canada

**China Sales Office**

Shanghai, China

**Czech Republic Sales Office**

Brno, Czech Republic

**Denmark Sales Office**

Stoevring, Denmark

**Germany Sales Office**

Mechernich, Germany

**Italy Sales Office**

Livorno, Italy

**Spain Sales Office**

Barcelona, Spain

**Ukraine Sales Office**

Lviv, Ukraine

[www.agneovo.com](http://www.agneovo.com)